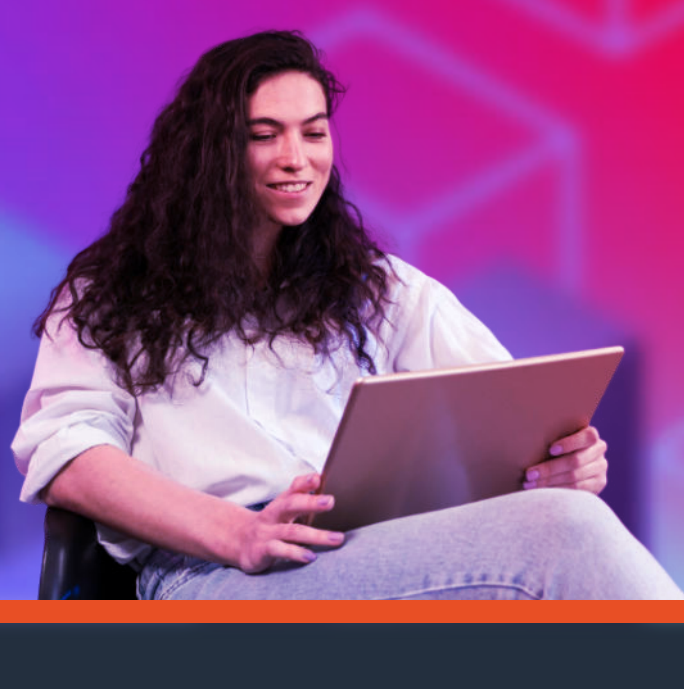


Plan your AWS Certification Journey



Which AWS Certification should I start with?

NEW TO IT AND CLOUD

From a non-IT background, switching to a cloud career?

Start with: AWS Certified Cloud Practitioner to validate foundational AWS Cloud knowledge, then earn AWS Certified AI Practitioner to showcase AI knowledge.

Outcome: Sharpens your competitive edge. Positions you for in-demand cloud and AI job roles and to earn additional AWS Certifications.

LINE-OF-BUSINESS ROLES

In sales/marketing or other business roles?

Start with: AWS Certified Cloud Practitioner to validate foundational AWS Cloud knowledge, then earn AWS Certified AI Practitioner to showcase AI knowledge.

Outcome: Sharpens your competitive edge with in-demand AI and cloud knowledge and positions you for career advancement and higher pay.

IT PROFESSIONALS

Do you have 1-3 years of IT or STEM background?

Start with: An Associate-level AWS Certification that aligns with your role. AWS Certified AI Practitioner is recommended to validate conceptual AI knowledge.

Outcome: Boosts your confidence and credibility in contributing to AI and machine learning projects. Sets you up for career advancement, higher pay, and to earn advanced AWS Certifications.

AWS Certification Paths

Below are top cloud job roles, role responsibilities, and AWS Certification Paths aligned with those roles. Select the role(s) you are interested in and get started or continue your AWS Certification journey to achieve your career goals.

Note: You are not required to follow these paths. These are recommended pathways. AWS Certified Cloud Practitioner is an optional step for candidates with an IT or STEM background. AWS Certified AI Practitioner is recommended for IT and non-IT professionals looking to leverage AI.

[Discover more about AWS certifications](#)



ROLES & RESPONSIBILITIES

AWS CERTIFICATION PATHS

Architecture

Solutions Architect

Design, develop, and manage cloud infrastructure and assets, work with DevOps to migrate applications to the cloud.



Application Architect

Design significant aspects of application architecture including user interface, middleware, and infrastructure, & ensure enterprise-wide scalable, reliable, and manageable systems.



Data Analytics

Cloud Data Engineer

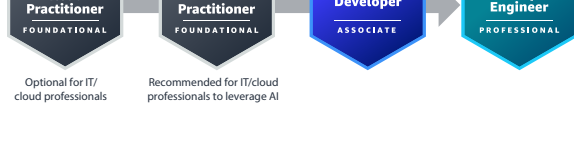
Automate collection and processing of structured/semi-structured data and monitor data pipeline performance.



Development

Software Development Engineer

Develop, construct, and maintain software across platforms and devices.



Operations

Systems Administrator

Install, upgrade, and maintain computer components & software, and integrate automation processes.



Cloud Engineer

Implement & operate an organization's networked computing infrastructure & Implement security systems to maintain data safety.



DevOps

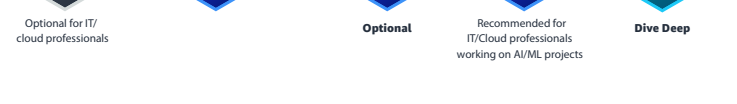
Test Engineer

Embed testing and quality best practices for software development from design to release, throughout the product life cycle.



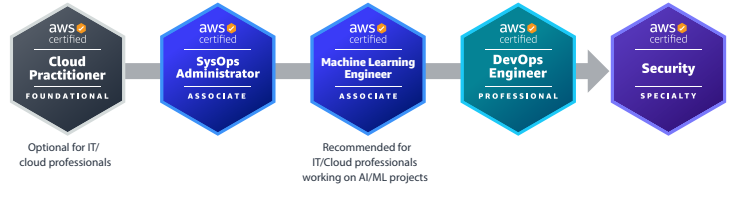
Cloud DevOps Engineer

Design, deployment, and operations of large-scale global hybrid cloud computing environment, advocating for end-to-end automated CI/CD DevOps pipelines.



DevSecOps Engineer

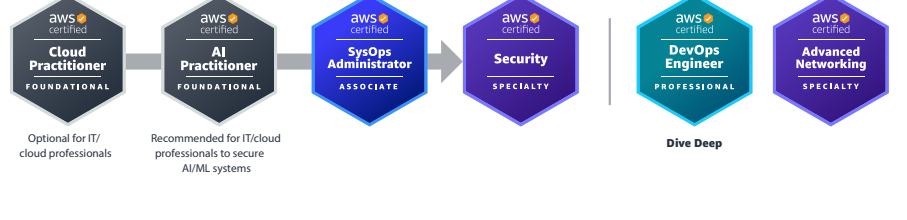
Accelerate enterprise cloud adoption while enabling rapid and stable delivery of capabilities using CI/CD principles, methodologies, and technologies



Security

Cloud Security Engineer

Design computer security architecture and develop detailed cyber security designs. Develop, execute, and track performance of security measures to protect information.



Cloud Security Architect

Design and implement enterprise cloud solutions applying governance to identify, communicate, and minimize business & technical risks.



Networking

Network Engineer

Design and implement computer and information networks, such as local area networks (LAN), wide area networks (WAN), intranets, extranets, etc.



AI/ML

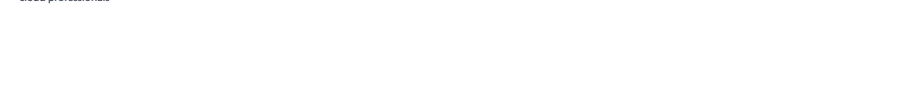
Prompt Engineer

Design, test, and refine text prompts to optimize the performance of AI language models.



Machine Learning Engineer

Research, build, & design artificial intelligence (AI) systems to automate predictive models, and design machine learning systems, models, and schemes.



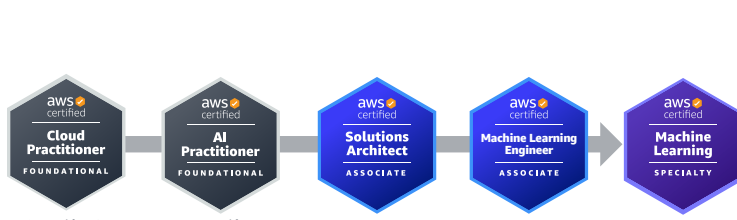
Machine Learning Ops Engineer

Build and maintain AI and ML platforms and infrastructure. Design, implement, and operationally support AI/ML model activity and deployment infrastructure.



Data scientist

Develop and implement AI/ ML models to solve business problems. Train and fine tune models and evaluate their performance.



Invest in your team's future today with

AWS Skill Builder Subscription

- starting at just **RM2200** per user/year for a team minimum of five.

[Get Started Today!](#)



"Certifications add credibility and demonstrate my commitment to learning and implementing best practices in real-life projects. The AWS Certified Solutions Architect – Professional and AWS Certified DevOps Engineer – Professional certifications gave me the best ratio of time and effort to value and have done the most for my reputation."

—Igor Soroka, Freelance Cloud Software Consultant



"Now I have a much better understanding of the AWS ecosystems, what services exist, and what use cases fit each service. I started with the AWS Certified Solutions Architect – Associate and I now hold 10 AWS Certification(s). What I learned really changed my perspective of what's possible in the cloud and transformed the way I work and how quickly I can get things done."

—Rola Dali, Senior Lead, Data Science